

An aerial photograph of a vast, lush green rice paddy field. The field is divided into numerous rectangular plots by a network of narrow, winding irrigation channels. The water in the channels is a darker shade of green, contrasting with the bright green of the rice plants. In the distance, a line of trees and a few buildings are visible under a clear sky.

Mechanized Hybrid Rice Establishment in US



Labor & water shortages may require modifications to common practices

Labour shortage, rise in cost hits rice production

Alvin Mendonca, TNN Aug 17, 2012, 06:12AM IST

Tags: Shivaraju | Hemavathi backwater.

Hassan: Sakleshpur is known for its coffee and rice production due to acute labour shortage and an increase in the production would result in price rise, affecting common man.

In the taluk, rice is grown on 12,550 hectares, out of which 3,200 are in Hemavathi backwater. Currently 9,550 hectares is available for rice

Feeling the pinch of China's labor shortage

By Channtal Fleischfresser | March 4, 2013, 6:04 AM PST

The world's largest workforce is perhaps already starting to shrink. China's working-age population declined by 3.45 million people in 2012 to 937 million, and the National Bureau of Statistics predicts declines will continue until 2030.

Summer paddy cultivation crippled by agricultural costs and labor shortages

By IMNA:

Due to the high costs of fertilizer, low water availability and accompanying diesel costs, and reduced amounts of workers willing to work as day laborers in summer paddies, rice farmers around Mor State have confirmed that their summer paddy harvests will fall dramatically short of the yield planned for the 2010 summer season by the Burmese government.

Farm labor shortage looms as young workers steer clear of agriculture

By PETER HECHT
The Sacramento Bee

Published: Thursday, Mar. 14, 2013 - 6:24 am

am

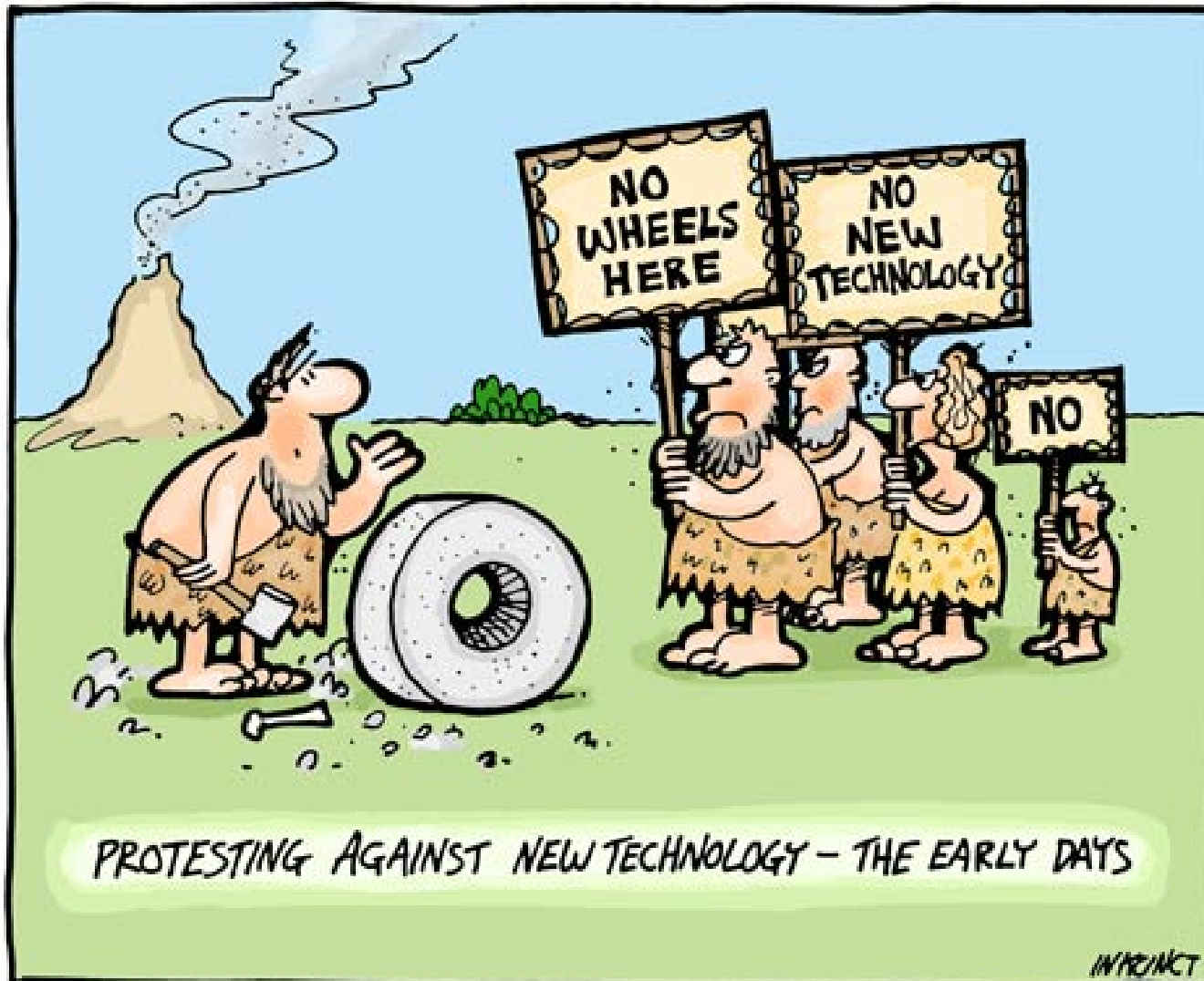
WATER MATTERS News From the Columbia Water Center

Direct Seeding of Rice – A Simple Solution to India's Water Crisis?

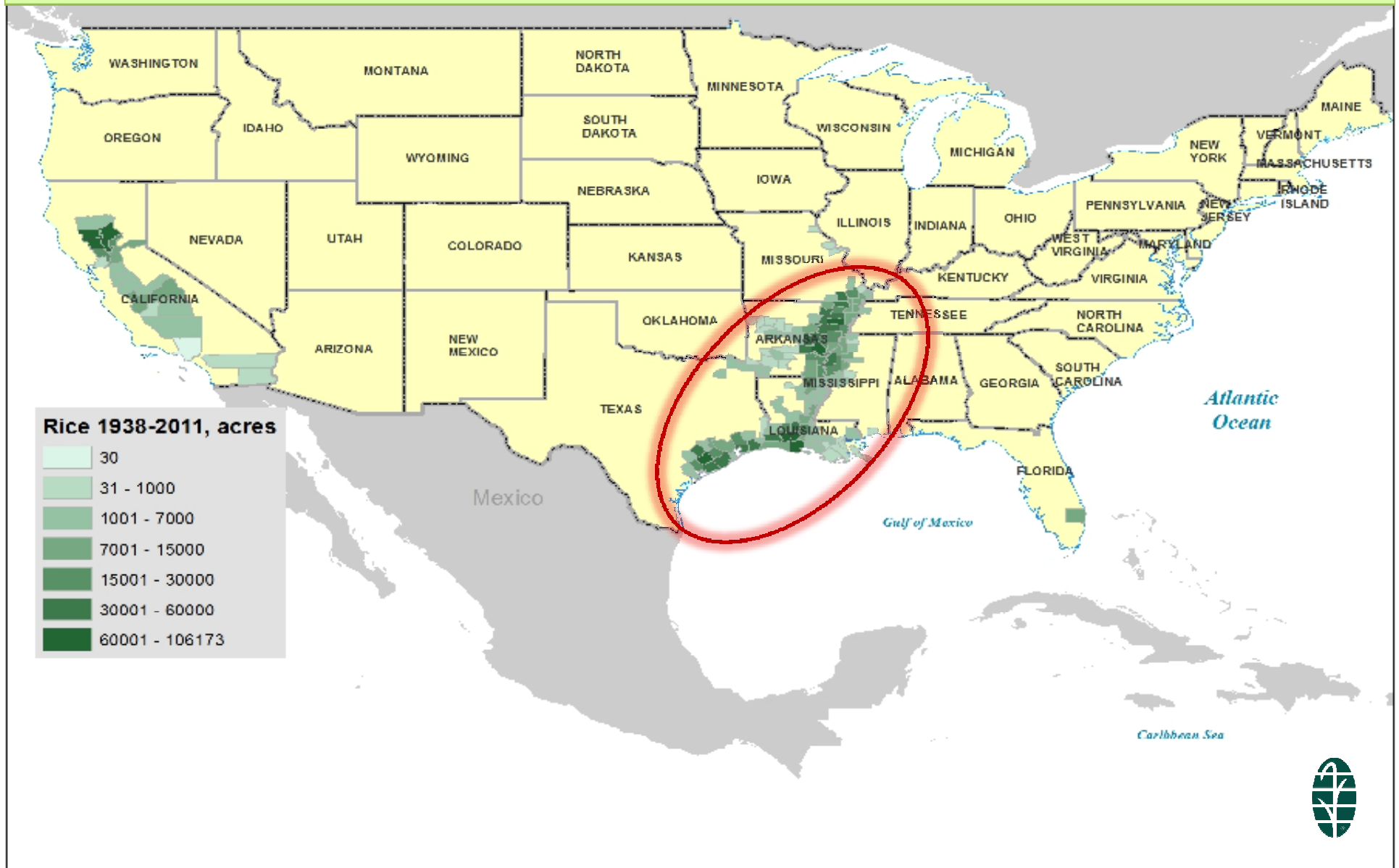
by Lakis Polycarpou | 11.18.2010 at 3:17pm



New technology was not an easy sale...



Rice farming in USA is fully mechanized



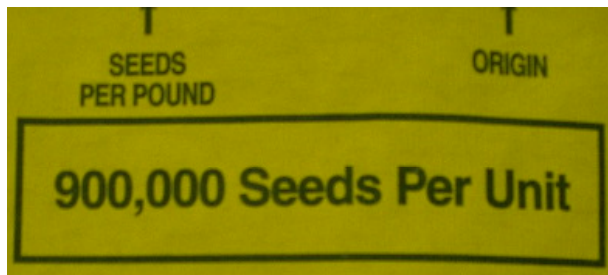
It was not easy sell to US farmer that hybrids can be seeded at low rates

Variety and Hybrid	Seeding rate (kg/ha)
2000	
Cocodrie	100-156
XL6	45
2013	
CL161	84 - 112
CLXL745	23 - 34*

*Seeding rate is based on estimated viable kernels (VK) per Kg



We have developed precision planting approaches to drill less than 35kg/ha



+

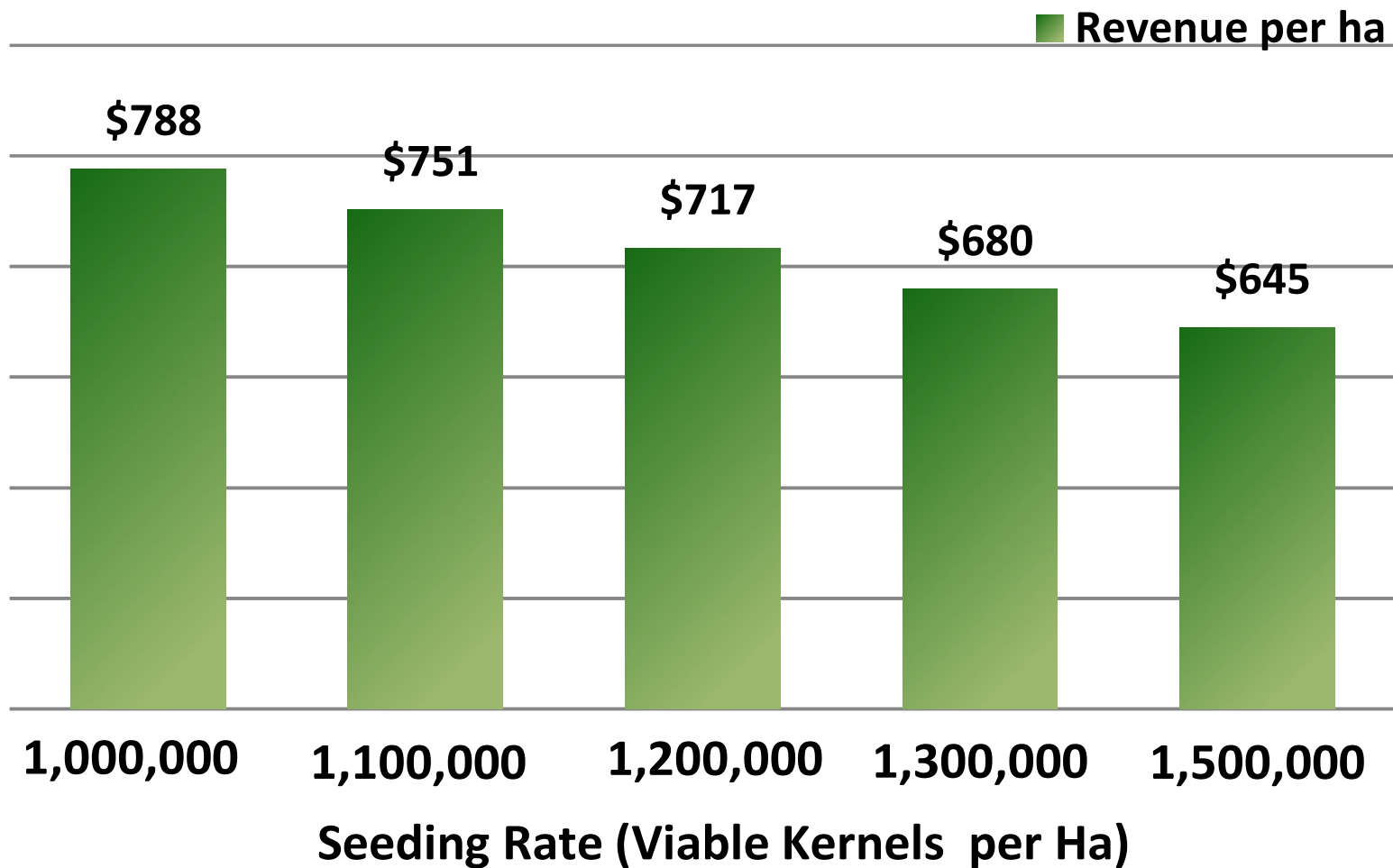


= less than 1.5
million seed/ha



Is up to the farmer the decision of how much seed he will use...

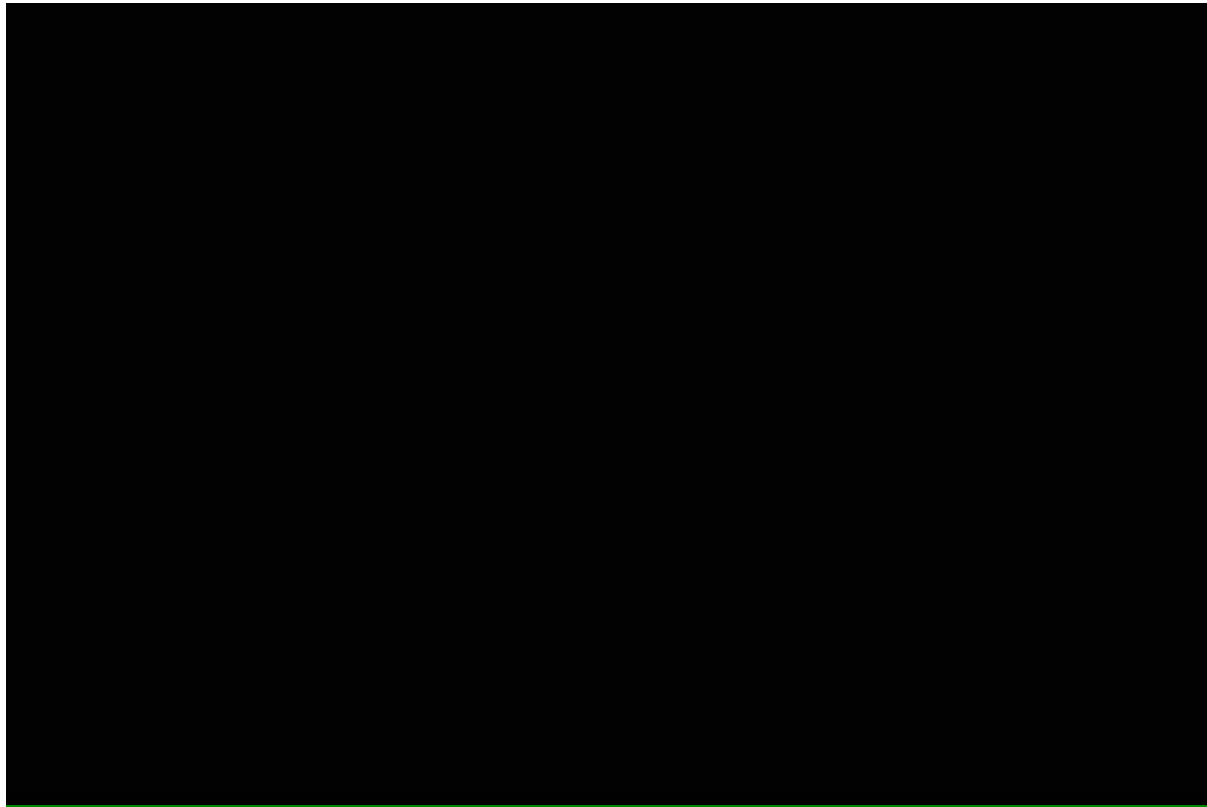
XL753



High quality seed is a must to guarantee
the expected plant stand



Special attention to seed delivery system is required



Sweet through the whole season
along with the farmer



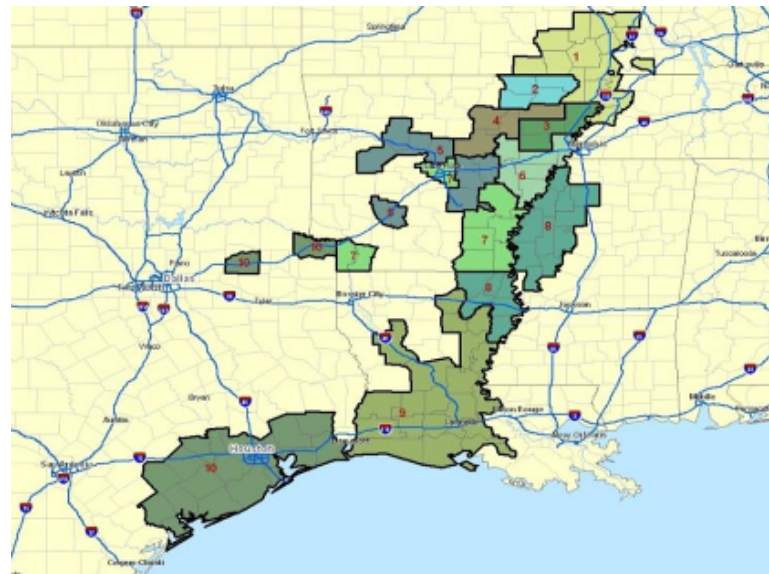
No changes on other cultural practices were required for hybrids



The goal: Maximize seeding efficiency



Plant nutrition to reflect hybrid needs



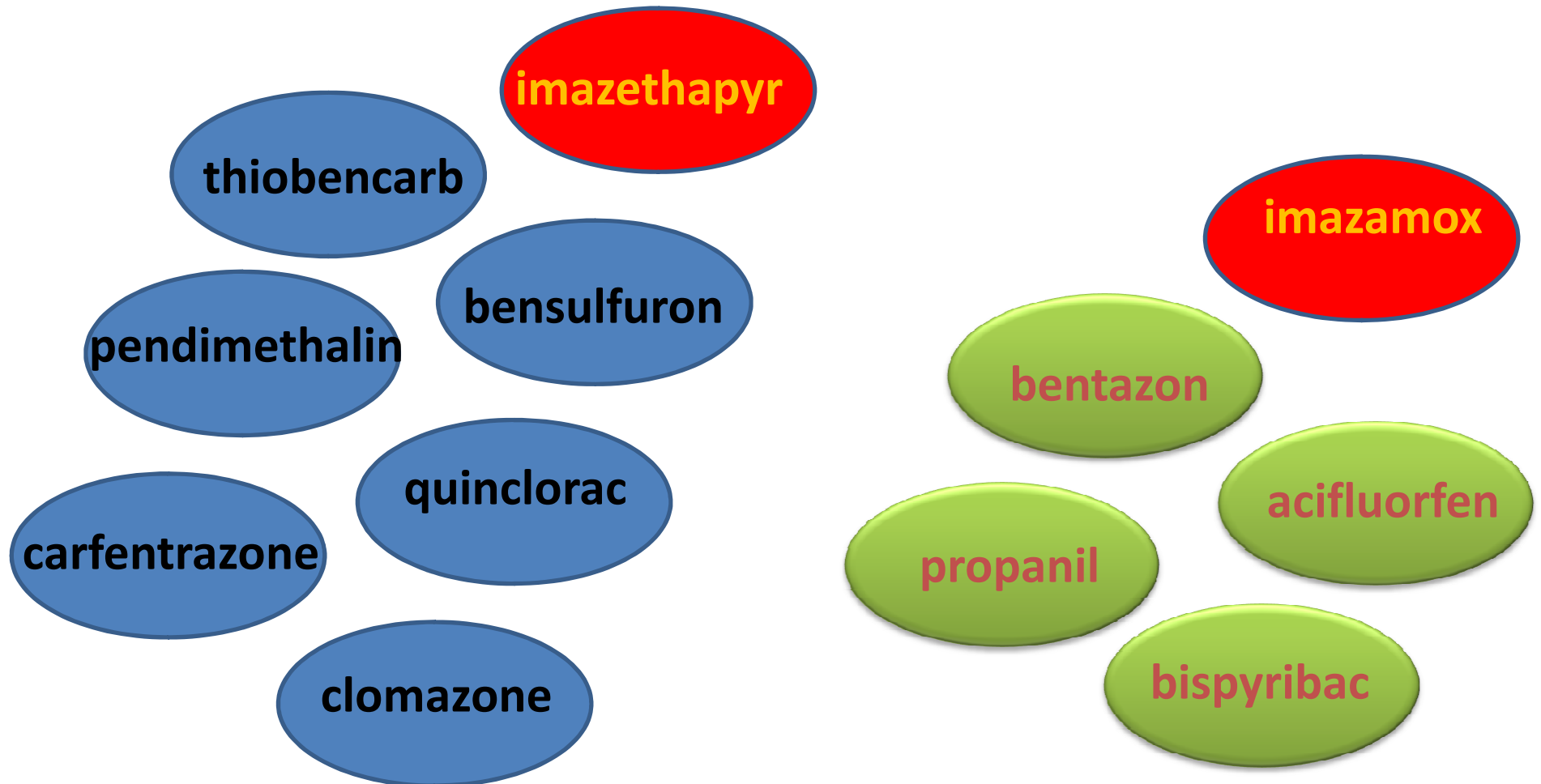
Soil Type	Geographical Areas				
	Southern AR, MS and North LA	South LA	North AR, South East MO	East TX and South of Houston	Wast Tx and North of Houston
Silt Loam	120-0-30				90-0-30
Sandy Loam			90-0-30		
Clay	120-0-30				

*120-0-30 = Nitrogen applied at pre flood - mid season - boot

**For ratoon, apply 100 units of N before re flooding



The fight against weeds require a different solution for each case...



Timely harvest and post-harvest management to improve grain quality



Hybrids show potential for pivot irrigation



Mechanized
hybrid seed
productions was
required to fulfill
market needs



Is not going to be easy...





HYBRID RICE SEED

Thanks!

